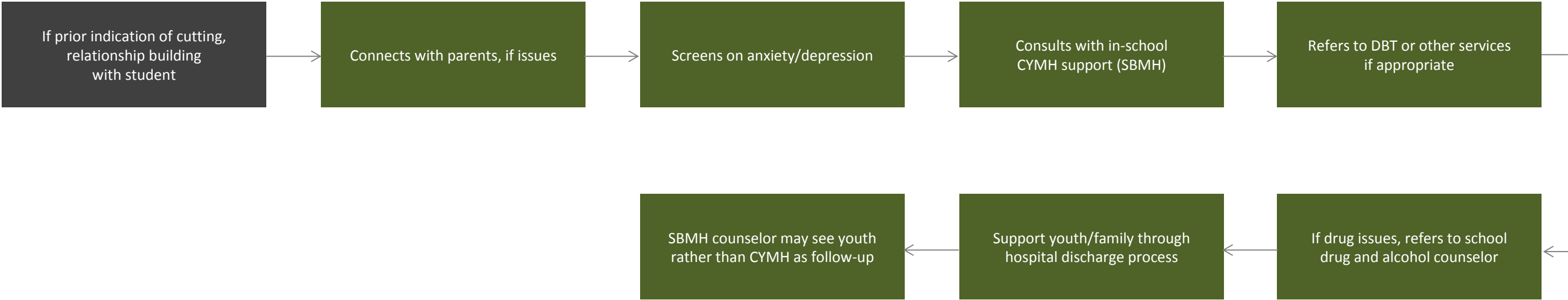
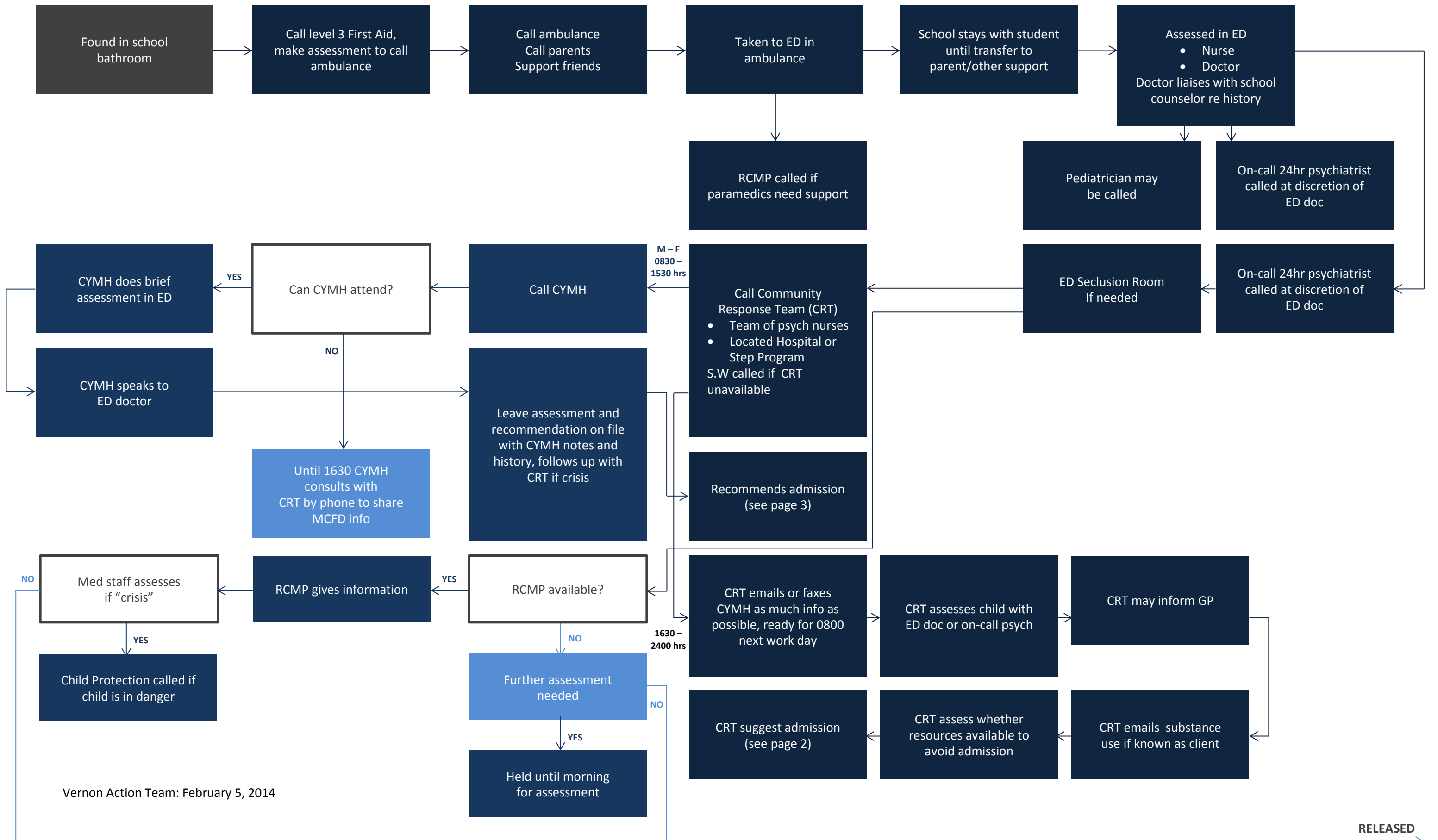


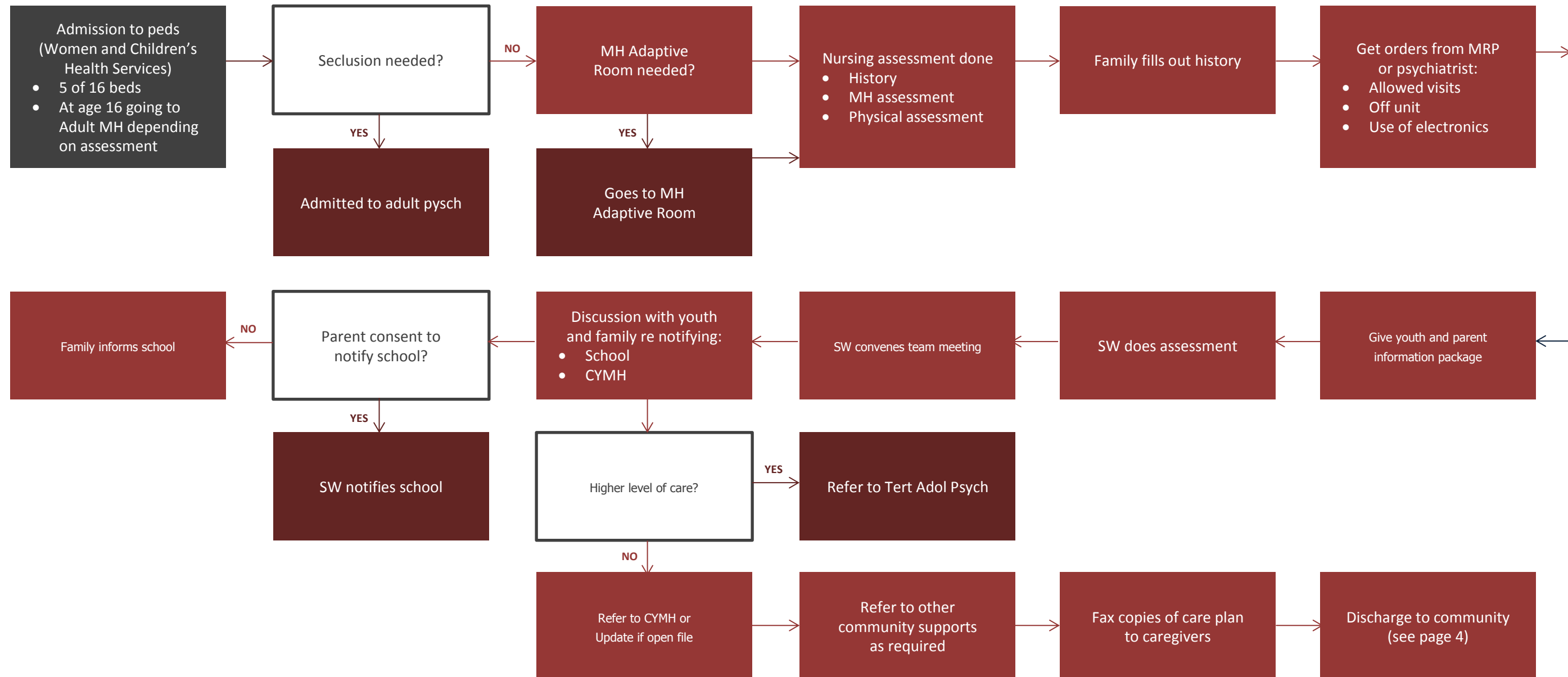
Action Team - PAGE 1: School counselor role



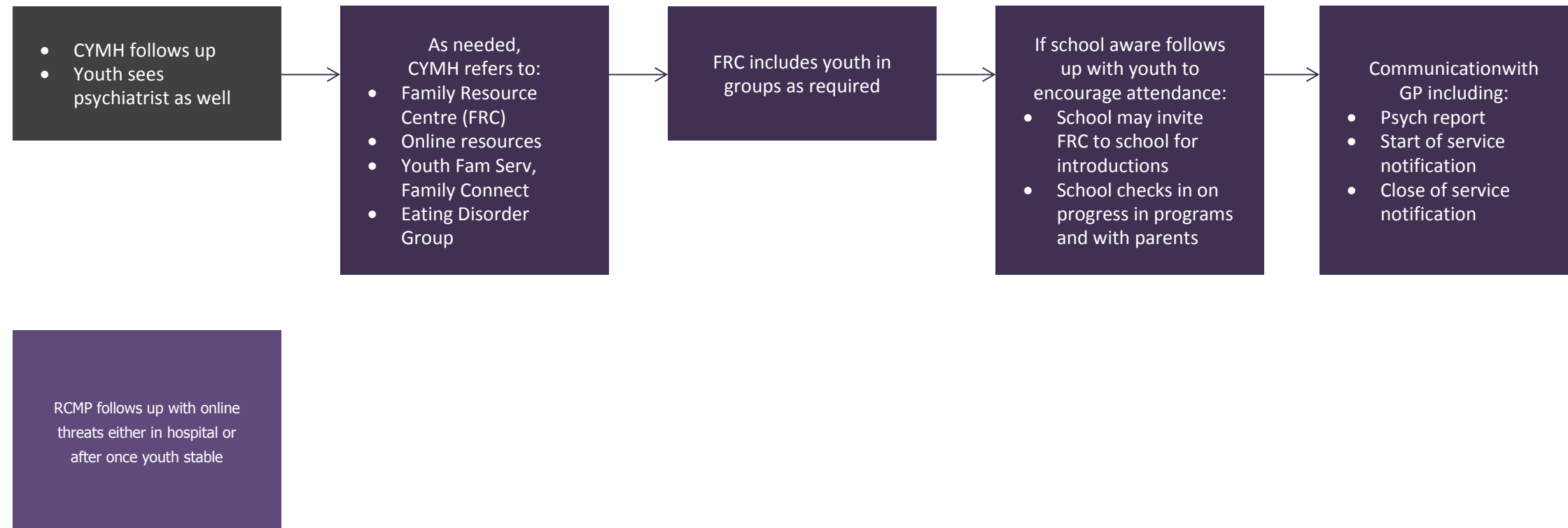
Example of Process Map - School to Emergency Department



PAGE 3: Admission to discharge (Maria)



PAGE 4: Discharge to community (Maria)



NOTES

- CYMH looks after most unwell children – moderate to severe within range of diagnosis
- Youth with mild to moderate problems are referred to other services
- Can attend other services while on waitlist – will follow-up on progress
- CYMH can look for emerging needs surfacing in community to develop/contract appropriate programs
- Youth/Fam Services connects with high-risk youth – could be with both Youth/Fam Services and CYMH or Youth/Family Serv on own
- CYMH develop care plans and partner with Youth/Fam Services for execution